

Buyers' Guide

Summer 2023



Security Operations for Credit Unions

Credit Unions face the same level of cyber threat as large financial services & banks. If you lack the budget and IT staff to provide in-house 24x7 detection and response, if it feels like a damaging attack is inevitable...

**You need the protection
of the Pack.**

Arctic Wolf® — The Leader in Security Operations

Solve security operations challenges for your organization with the Arctic Wolf Security Operations Cloud and 24x7 Concierge Security®.

arcticwolf.com/cuna



Opt-in to CUNA News:
The Daily and Web
Exclusives



Visit cuna.org/news



Follow @CUNA_News
& @cumagazine



Subscribe to the CUNA
News Podcast



CUNA News has you covered

The credit union industry is always on the move. We're here to tell your stories. Make CUNA News your go-to resource for credit union news and information.

Get updates on:

- Credit union advocacy
- Strategies for growth
- Industry events
- And so much more

Category Directory

ACCOUNTING

Aux, LLC

APPLICATIONS PROGRAMMING

Access Softek

ARCHITECTURE & CONSTRUCTION

The Redmond Company

ASSOCIATE BUSINESS MEMBERS

Alloya Corporate FCU

Aux, LLC

Caribou

CastleGarde

Catalyst Corporate FCU

CliftonLarsonAllen (CLA)

COLAB

Commercial Alliance

Comply-YES!

Constant

CO-OP Solutions

Cooperative Business Services

Corporate America CU

Corporate Central CU

Corporate One FCU

Coviance

CU ATM Services LLC

CU Business Group

CU Healthcare PayCard

CU Servnet

CURev1

Enhanced Software Products (ESP)

Envisant

Extensia Financial

Fidelity Information Services (FIS)

Fiserv

Jack Henry (formerly Symitar)

Louisiana Corporate Credit Union

Mbanq CUSO

Members Trust Company

Millennium Corporate CU

Mitel

NACUSO

NASCUS

National Association of Latino CU & Professionals (NLCUP)

Nectar

Nymbus CUSO

Origence

Pactola

Premier Consumer Capital

PSCU

Reseda Group

Samaha & Associates, Inc.

Splash Financial

Strum

Trellance

TriCorp FCU

Vanco Payments LLC

Visa

VisiFI

Vizo Financial Corporate CU

VolCorp

ASSET/LIABILITY MANAGEMENT

FlowTracker Analytics, Inc

RateShop, LLC

ATM & REMOTE DELIVERY

FIS

AUDIT

Comply-YES!

Nearman, Maynard, Vallez, CPAs

SkyStem, LLC

AUTO LENDING

Chariot Financial

MeridianLink

Origence

BANK SECRECY ACT (BSA)

10-D, Inc.

CUNA Strategic Services Alliance Providers

BRANCH DEPLOYMENT/PLACEMENT

The Redmond Company

BRANCH MERCHANDISING & DESIGN

CUNA Strategic Services Alliance Providers

The Redmond Company

BRANCH/PRODUCT/MEMBER PROFITABILITY

The Redmond Company

BRANCH SECURITY

Arctic Wolf

CUNA Strategic Services Alliance Providers

BRANDING

Foresight Group

The Redmond Company

BUSINESS CONTINUITY PLANNING

Arctic Wolf

CUNA Strategic Services Alliance Providers

KingsBridgeBCP

Millennial Vision, Inc.

BUSINESS CONTINUITY PLANNING & DISASTER RECOVERY

KingsBridgeBC

UpStreme, Inc.

BUSINESS DEVELOPMENT

Chariot Financial

FlowTracker Analytics

BUSINESS LENDING

Alloya Corporate FCU

MeridianLink

CALL CENTERS

CUNA Strategic Services Alliance Providers

Eltropy

Glia

PSCU

CHECKS & WIRE TRANSFER SERVICES

Alloya Corporate FCU

VolCorp

CLOUD COMPUTING

Adlumin, Inc.

Alacriti

Prodigy

Trellance

COLLECTIONS & RECOVERIES

Chariot Financial

ConServe

REPAY

COMMUNITY FINANCIAL EDUCATION

Ever Green 3C

Spave

Visa

COMPENSATION

Blue Horizons Group

OutSolve

CONSULTANTS

CU-Interface

The Redmond Company

Trellance

CONSUMER LENDING

MeridianLink

Oak Tree Business Systems, Inc.

Origence

TruStage

Category Directory

CORE PROCESSING ADMINISTRATION

Aurora Advantage by CSPI
Catalyst Corporate Federal Credit Union
CompuSource Systems, Inc.
Corelation, Inc.
CU-Interface
Enhanced Software Products, Inc.
FIS
Jack Henry
Member Access Processing
Prodigy
Synergent

CREDIT CARDS

CO-OP Solutions
Envisant
FIS
PSCU

CREDIT SCORING & RISK BASED LENDING

Trellance

CUNA STRATEGIC SERVICES ALLIANCE PROVIDERS

3SI
Agility
Amazon Business
CNote
Constant
CUE
CUVM
Eltrophy
Envisant
Goalsetter
Illuma
interface
InterLutions
JMFA
MessagePay
Newtek
Prisma Campaigns
QCash Financial
Ranqx
Sharetec
SilverSky
Tetto5G
TraceSecurity
Venmindr
Verafin
Vericast
Zest AI
Zogo

CUSO

Chariot Financial
Comply-YES!
CU-Interface
CO-OP Solutions
Envisant
Foresight Group
Member Access Processing
Origence
Prodigy
PSCU
Reseda Group
Spave
VolCorp

DATA WAREHOUSE/DATABASE ADMINISTRATION

Trellance

DEBIT CARDS

CO-OP Solutions
Envisant
FIS
Fiserv
Member Access Processing
PSCU
Synergent

DEPOSIT PRODUCT INNOVATION

Alogent

DIGITAL MARKETING STRATEGIES

Bundlefi
CUNA Strategic Services Alliance Providers
DataTrac
Eltrophy
MeridianLink
Prisma Campaigns
Visa

ELECTRONIC BILL PAYMENT

Alacriti
Alloya Corporate FCU
REPAY

EMAIL MARKETING

Prisma Campaigns
Synergent

EMPLOYEE BENEFITS

CUNA Strategic Services Alliance Providers
OM Financial Group
The Beans

EMPLOYEE DEVELOPMENT & TRAINING

CUNA Councils

FICS®

Your Mortgage Software
Partner Since 1983

**Experience
the FICS®
Advantage:
Dependable
Software
& Support**

By automating mortgage operations with FICS' software, APIs, and web applications, you'll have more time to deliver prompt, personalized customer service.



LOAN PRODUCER®
Loan Origination Software

MORTGAGE SERVICER®
Mortgage Servicing Software

COMMERCIAL SERVICER®
Commercial Servicing Software

www.FICS.com™
972.458.8583

Category Directory

EMPLOYEE/INTERNAL MARKETING

Intranet Connections

FINANCIAL COMPLIANCE

Arctic Wolf
Nearman, Maynard, Vallez, CPAs
SkyStem, LLC

FINANCIAL REPORTING - BOARD OR MANAGEMENT

FlowTracker Analytics, Inc
SkyStem, LLC

FRAUD MANAGEMENT/OVERSIGHT

Computer Services, Inc. (CSI)
DefenseStorm
SkyStem, LLC
Visa

GIFT/STORE VALUE CARDS

Member Access Processing

HOME EQUITY LENDING

Coviance
Oak Tree Business Systems, Inc.

HR COMPLIANCE

OutSolve

HR OPERATIONS (PROCESSES)

OutSolve

HR SYSTEMS & TECHNOLOGY

Blue Horizons Group

IDENTITY THEFT

DefenseStorm

IMAGING SYSTEMS/RECORDS (DOCUMENT MANAGEMENT SYSTEMS)

Alogent
Aurora Advantage by CSPI
Millennial Vision, Inc.

INCENTIVE PLAN-MARKETING & BUSINESS DEVELOPMENT

Blue Horizons Group

INCENTIVE SYSTEMS & PROGRAMS

Blue Horizons Group

INDIRECT LENDING

Chariot Financial
CUNA Strategic Services Alliance Providers
Origence

INFORMATION & NETWORK SECURITY

10-D, Inc.
Adlumin, Inc.
Arctic Wolf
Computer Services, Inc. (CSI)
CUNA Strategic Services Alliance Providers
Jack Henry
UpStreme, Inc.
Visa

IN-STORE BRANCHES

The Redmond Company

INSURANCE

OM Financial Group
TruStage

INTRANET ADMINISTRATION

Intranet Connections

INVESTMENT/BROKERAGE SERVICES

Alloya Corporate FCU

INVESTMENT SERVICES

Alloya Corporate FCU
QwickRate
TruStage
VolCorp

LEADERSHIP DEVELOPMENT/SUCCESSION

Human Emergence Group

LENDING IN DIGITAL & MOBILE CHANNELS

Aurora Advantage by CSPI
Elitropy
MeridianLink

LENDING REGULATIONS & COMPLIANCE

10-D, Inc.
DefenseStorm

LENDING TECHNOLOGY SYSTEMS & PLATFORMS

Coviance
CUNA Strategic Services Alliance Providers
DefenseStorm
FICS
Jack Henry
MeridianLink
Oak Tree Business Systems, Inc.
REPAY

LIQUIDITY MANAGEMENT

Alloya Corporate FCU
FlowTracker Analytics
QwickRate
RateShop, LLC

LOAN GROWTH STRATEGIES

Chariot Financial

LOAN PARTICIPATIONS & TRADING

Alloya Corporate FCU
Catalyst Corporate Federal Credit Union

LOAN PORTFOLIO ANALYTICS

Alloya Corporate FCU
CUNA Strategic Services Alliance Providers
MeridianLink
QwickRate
Trellance

MAIN OFFICE & BRANCH DESIGN

CUNA Strategic Services Alliance Providers
The Redmond Company

MARKETING COMPLIANCE

Aux, LLC

MEMBER ACQUISITION & RETENTION (STRATEGIES & TACTICS)

Bundlefi
Dataatrac
Spave
The Redmond Company

MEMBER PERSONAL FINANCE

Reseda Group
Spave

MORTGAGE LENDING

FICS
MeridianLink
QRL Financial Services

MORTGAGE LOAN SERVICING

FICS

MORTGAGE LOAN SUBSERVICING

Midwest Loan Services

ONBOARDING

Bundlefi
Prisma Campaigns

Category Directory

ONLINE BANKING/E-COMMERCE

Access Softek
Alacriti
Alogent
Aurora Advantage by CSPI
Cubus Solutions, Inc.
Fiserv
Tyfone

OPERATIONS COMPLIANCE

Aux, LLC
DefenseStorm
Venminder

ORGANIZATIONAL DEVELOPMENT

Human Emergence Group

OVERDRAFT PROTECTION/COURTESY PAY PROGRAMS

CUNA Strategic Services Alliance Providers

PERFORMANCE MANAGEMENT

Blue Horizons Group

PRODUCT DEVELOPMENT & EVALUATION

FlowTracker Analytics

PRODUCT PRICING

FlowTracker Analytics
RateShop, LLC

PROMOTIONS/ADVERTISING

Chariot Financial
DataTrac
Prisma Campaigns

REAL ESTATE & MARKET CONSULTING

The Redmond Company

RECRUITMENT/ONBOARDING/RETENTION

OM Financial Group

REMOTE DEPOSIT CAPTURE

Alloya Corporate FCU

RESEARCH/MCIF/CRM/DEMOGRAPHICS/TRACKING & REPORTING

The Redmond Company
Trellance

RISK MANAGEMENT

DefenseStorm
Member Access Processing
UpStreme, Inc.
Venminder

SALES MANAGEMENT/SALES & SERVICE CULTURE DEVELOPMENT

Blue Horizons Group

SECONDARY MORTGAGE MARKET

FICS
QRL Financial Services

SHARED BRANCHING

Aux, LLC
CO-OP Solutions

STATEMENT PROCESSING

Cubus Solutions
Enhanced Software Products, Inc.

STRATEGIC FINANCIAL PLANNING & ADVISORY SERVICES

Catalyst Corporate Federal Credit Union
Computer Services, Inc. (CSI)
UpStreme, Inc.

STRATEGIC FINANCIAL PLANNING & BUDGETING

FlowTracker Analytics
Spave
The Beans

TALENT MANAGEMENT/WORKFORCE PLANNING

Trellance

TECHNOLOGY COMPLIANCE

Arctic Wolf
Computer Services, Inc. (CSI)
CUNA Strategic Services Alliance Providers
DefenseStorm

USER TECHNICAL SUPPORT

Visa

WEB DEVELOPMENT/MANAGEMENT

CompuSource Systems, Inc.

WELLNESS PROGRAMS

The Beans

WIRELESS (MOBILE) BANKING

Access Softek
Alacriti
Alogent
Cubus Solutions, Inc.
Eltropy
Jack Henry
Member Access Processing
Tyfone

YOUTH MATERIALS

Ever Green 3C



meridianlink®

Transform to Better

MeridianLink® makes even the most complex lending landscape easier to manage through our multi-product platform. Powering a frictionless, digital-first lending experience, we'll help transform your financial institution into a modern digital lending organization.



Trusted



Scalable



Modern



Secure



MERIDIANLINK.COM

© 2023 MeridianLink, Inc.
All rights reserved.

Provider Directory



10-D, Inc.
Academy-Compliance-Information Security
 8717 W 110th Street, Suite 500
 Overland Park, KS 66210
 Brad Goetsch
 877-204-5769
bgoetsch@10dsecurity.com
www.10dsecurity.com/

As a national information security and compliance firm, 10-D has specialized in serving financial institutions since 2004. Our benchmark services include: Penetration Testing, Social Engineering, IT Audit, BSA/AML Audits, Model Validations, Lending and Deposit Compliance Audits, just to name a few. We also offer training and CPE opportunities for everyone from senior management to the customer service team. The frameworks for our audit programs are designed to scale to the size and complexity of the institution, so we can work with institutions small and large, delivering best-in-class reports in a timely manner, allowing you to quickly begin the remediation process.



ACCESS SOFTEK, INC

Access Softek
 727 Allston Way, Suite C
 Berkeley, CA, 94710
 Mark Barish
 510-725-7635
mbarish@accesssoftek.com
www.accesssoftek.com

Access Softek is the trusted partner of credit unions and banks, providing comprehensive Access Digital suite of banking solutions that includes everything consumers and business owners need from the basics of online and mobile banking to account opening and lending, conversational banking, biometric authentication, real-time fraud prevention, investment solutions, modern intuitive member UI/UX, and other innovative products.

Today, over six million customers securely and easily manage their money using Access Softek solutions. Access Softek sets the standard for the omnichannel digital banking landscape, and for over three decades continues to deliver industry firsts and ensure reliable support from its Berkeley, California headquarters.
www.accesssoftek.com



adlumin™

Adlumin Inc.
 1140 3rd Street NE
 Suite 340
 Washington, DC 20002
 Timothy Evans
 202-352-8001
timothy.evans@adlumin.com
www.adlumin.com

Adlumin Inc. is a patented, cloud-native Managed Detection and Response (MDR) platform plus extended risk management and security services. The platform focuses on advanced cyber threats, system vulnerabilities, and sprawling IT operations to command greater visibility, stop threats, reduce your business risk, and automate compliance. Adlumin leverages powerful machine learning, identifies critical threats, automates remediation rules and systems updates, and provides live continuous compliance reporting.

Provider Directory

Alacriti

Alacriti

1551 S. Washington Ave
#130
Piscataway, NJ 08854
Alacriti Payments Experts
908-791-2916
marketing@alacriti.com
www.alacriti.com

Alacriti is a leading financial technology company dedicated to helping credit unions accelerate their digital payments transformation, all without requiring legacy system overhauls or replacement.

Alacriti's cloud-based platform, Orbipay, delivers solutions across the payments ecosystem, including [The Clearing House's RTP@network](#), [Electronic Bill Presentment and Payments \(EBPP\)](#), and [Digital Disbursements](#).

Orbipay solutions empower clients to affordably deliver the modern digital payment experiences today's members demand across all channels, such as [real-time payments](#) and [unified money movement services](#). Orbipay's flexible framework allows for simple integration with commonly used financial systems including, digital banking, fraud and risk management services, and core banking systems. In addition, our clients benefit from faster time to market and continuous innovation.

To speak with an Alacriti payments expert about your credit union's needs, contact us at (908) 791-2916 or info@alacriti.com.



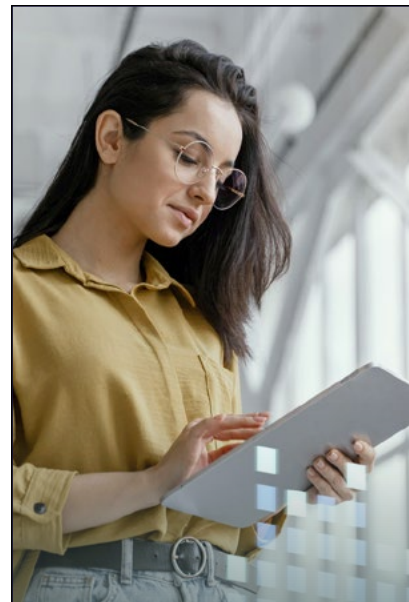
Corporate Federal Credit Union

Alloya Corporate FCU

184 Shuman Blvd., Suite 400
Naperville, IL 60563
Tim Bruculere
518-292-3808
tim.bruculere@alloyacorp.org
www.alloyacorp.org

Alloya provides cooperative financial services to 1,400 member credit unions and credit union entities nationally, including transaction, liquidity and investment services. Headquartered in Naperville, Illinois, Alloya offers a dependable and affordable line of credit, secure and efficient product access and settlement, and unparalleled member service – which are available to all credit unions with or without a capital contribution. In conjunction with its wholly owned CUSO, Alloya Solutions, LLC, Alloya leverages the power of aggregation to ensure its members remain competitive in today's marketplace. In addition to the support Alloya provides its membership, Alloya supports multiple credit union leagues and associations throughout the country and gives back to local communities nationwide by providing a variety of charitable donations. To learn more, visit www.alloyacorp.org.

PROUD ASSOCIATE
BUSINESS MEMBER



Gain an
extension
of your team.

Hosted Jack Henry™
Symitar® Core Processing

Digital Banking

Payment Solutions

Targeted Marketing
& Transactional
Data Mining

Conversions, Training,
& Implementations

Core, Payments, and
Efficiency Consulting

Partnership, solutions,
security, and service, all
from a single source.

That's the
Synergent Advantage.

 **SYNERGENT**
synergentcorp.com

Provider Directory



Alogent

35 Technology Pkwy South
Suite 200
Peachtree Corners, GA 30092
Wendi Klein
678-966-0844
marketing@alogent.com
www.Alogent.com

Alogent provides proven, end-to-end check payment processing, digital, online, and mobile banking, enterprise content and information management, and data analytics platforms. Our unique approach spans the entire transaction ecosystem—from capturing and digitizing transaction data, to automating entire transaction workflows and making information available across the enterprise. Alogent's solution suites leverage the latest in AI, machine learning and predictive analytics, enabling financial institutions to deliver products and services that boost engagement through personalization and data-backed decisions.



Arctic Wolf

8939 Columbine Road
Suite 150
Eden Prairie, MN 55347
Abigail Crider
888-272-8429
abigail.crider@arcticwolf.com
arcticwolf.com/credit-unions

Credit unions continue to be prime targets of cybercriminals due to the highly confidential nature of the data credit unions possess and high financial reward from attacks. Arctic Wolf helps over 130 credit unions secure critical data by consolidating multiple cybersecurity tools while increasing their security posture. Learn why our credit union customers trust Arctic Wolf to:

- » **Consolidate** multiple tool sets while increasing their security posture.
- » **Monitor** environments 24x7 to detect and respond to cybersecurity threats.
- » **Provide** continual vulnerability assessments.
- » **Identify** threats targeting network or cloud applications.
- » **Conduct** cybersecurity awareness training for security teams and employees.



Aurora Advantage by CSPI

805 W Stadium Blvd.
Jefferson City, MO 65109
Emily Twillman
573-556-3251
etwillman@cspiinc.com
www.auroradigitalbanking.com/

Aurora Advantage represents the next generation cloud-based core software solutions for small and mid-sized credit unions. Our complete Aurora Digital Product Suite streamlines the member experience by seamlessly integrating Core, Online Account Opening & Lending, Digital & Mobile Banking, Voice Banking, and Document Management & Tracking.

We are core-agnostic and support API-first technology to create real-time integration for our Aurora Advantage Digital Banking product suite. Our dedicated team strives to enhance the user experience, deliver innovative solutions, significantly increase productivity, and provide exceptional service that exceeds your expectations. We believe if our customer succeeds, we succeed.

Provider Directory

**CELEBRATING
30 YEARS**



Aux, LLC

274 Union Blvd., Suite 320

Lakewood, CO 80228

Alan Bergstrom

720-677-3241

abergstrom@auxteam.com

www.auxteam.com

Aux, LLC, is grateful to be celebrating 30 years of serving CUs! Aux offers a robust and flexible suite of back-office outsourced services, unlike any other organization in the nation. Founded in 1992, our accounting, CFO consulting, and compliance services help CUs who face growing burdens and turbulent times.

Outsourcing not only increases efficiency for our clients, but it can also save their credit union money and improve the overall member experience. We enjoy a 97% client satisfaction rating. Our Accounting and CFO services provide full or customized support, from daily processing to strategic budgeting and reporting. Our Compliance Services provide hands-on training, full service, marketing and policy compliance reviews, and custom service. We've helped dozens of credit unions overcome staffing and training challenges; discover how we can support your credit union! Schedule a time that works for you to meet with us for a zero-salesy, zero-pushy chat:

www.calendly.com/auxteam

**PROUD ASSOCIATE
BUSINESS MEMBER**



**Credit Union
National
Association**



Blue Horizons Group

2717 Commercial Center Blvd.

Suite E200

Katy, TX 77494

Colin Wong

404-293-7517

colin.wong@bluehorizonsgroup.com

<https://bluehorizonsgroup.com/>

Blue Horizons Group is an end-to-end provider of Sales Performance Management services. We provide strategic advisory services to improve your compensation strategy and incentive plan design. We also guide you through automated systems selection and provide implementation and post-implementation managed services. We bring decades of banking experience and financial services best practices to improve your sales performance. We deliver tailored solutions at every stage of your sales transformation journey regardless of the size of your organization.



Bundlefi

530 Seventh Avenue

Suite 507

New York, NY 10018

Neil Scheer

212-575-2034

neil@bundlefi.com

www.bundlefiinc.com/

At Bundlefi, we help credit unions find customers who are right for them. We believe banking should be more than just selling products, it should create long-lasting relationships between people and their financial institutions. Our customer acquisition programs utilize the latest technology to ensure data quality and integrity. Every consumer is verified through our cascading validation features, fraud prevention measures, and delivered directly into our client's application process or CRM. Learn more at corporate.bundlefi.com/.



Stay ahead of the curve

Make lending faster, easier, and better with the ultimate origination experience.

Automated, scalable, frictionless technology to help credit unions win in a digital world.

loan & account
origination

indirect
lending

marketing
automation

lending
operations

ORIGENCE

Learn more at origence.com

Provider Directory



Catalyst Corporate Federal Credit Union

6801 Parkwood Blvd.
Plano, TX 75024
Linda Dowdy
214-703-7843
ldowdy@catalystcorp.org
www.catalystcorp.org

Catalyst Corporate Federal Credit Union is a wholesale cooperative financial institution serving nearly 1,400 credit unions nationally with innovative core financial services and superior back-office support. Services, designed specifically for the credit union industry, include payment solutions, liquidity, investment options and balance sheet management assistance.

Catalyst Corporate strives to be the premier corporate credit union, providing exceptional member value in an efficient, safe and sound manner. Catalyst Strategic Solutions, LLC, a wholly-owned subsidiary, combines its over 30 years of experience with a cooperative business model to provide unparalleled service and access to analytical resources, strategic consultation and investment portfolio management services.

PROUD ASSOCIATE
BUSINESS MEMBER



Comply-YES!

7415 Chicago Road, Suite 103
Warren, MI 48092
Stephen Dedene
248-221-1828
sdedene@comply-yes.com
www.comply-yes.com

Comply-YES! is a compliance CUSO providing credit unions with a vacation from their compliance worries by offering cost-effective compliance services tailored to meet your needs. Whether you have an open compliance position, simply need additional compliance help or support, or need compliance audits, Comply-YES! has you covered. Now sit back, relax, and let the credit union compliance experts at Comply-YES! navigate the winding road of credit union compliance for you, so you can focus on what matters most: serving your members!

PROUD ASSOCIATE
BUSINESS MEMBER



Chariot Financial

1331 Park Plaza Drive, Suite 3
O'Fallon, IL 62269
Matt Cantonwine
618-363-2086
mcantonwine@chariotfinancial.org
www.chariotfinancial.org

Chariot Financial offers a comprehensive suite of services designed to help credit unions compete more effectively in the auto lending market. These include direct and indirect originations, processing and funding solutions, and lifecycle servicing. We can help your credit union with as much (or as little) as needed, and each program is tailored specifically to the needs of each client. Chariot prides itself on client service works tirelessly to ensure that the needs of both our clients and borrowers are fully met.



CompuSource Systems, Inc.

We Elevate Your Core

CompuSource Systems, Inc.

110 John Muir Drive
Amherst, NY 14228
Gary L. Gonzales
800-295-9100
info@css4cu.com
www.css4cu.com

CompuSource is a leading provider of complete core processing systems exclusively for credit unions. Our highly integrated core technology and services model makes our CompuShare System an ideal solution for credit unions seeking more value and agility. Servicing credit unions nationwide, CompuSource has the experience to support your current products and services and help realize your full membership potential.

Provider Directory



Computer Services, Inc. (CSI)

3901 Technology Drive
Paducah, KY 42001
Andy Lapp
800-545-4274
andy.lapp@csiweb.com
www.csiweb.com

As a forward-thinking technology partner, CSI delivers modern tools needed for credit unions to navigate a changing industry landscape and stay one step ahead of the competition. CSI drives value for its credit union customers by accelerating delivery of cutting-edge solutions surrounding fraud and anti-money laundering, managed services and cybersecurity, document services and more. CSI heavily invests in research and development, product partnerships and strategic acquisitions to provide credit unions with the most innovative technologies—all while maintaining a service-first mentality. Learn more by visiting: www.csiweb.com.



CO-OP Solutions

9692 Haven Avenue
Rancho Cucamonga, CA 91730
Wy Davis
678-812-1330
wyman.davis@coop.org
www.coop.org

Co-op Solutions is the market-leading financial technology ecosystem for credit unions. A proven innovator for more than 40 years, today we help credit unions become their members' primary financial relationship through the most reliable, secure, digital-first payments experience for the modern member. And, because every credit union is different, Co-op brings a core-agnostic, configurable approach to building a modern payments strategy that is right for credit unions and members alike.

Co-op understands what is unique and special about credit unions. We share the mission of people helping people. We are a cooperative built by, owned by and for the credit union movement. And we connect credit unions with other credit unions, serving as a catalyst for industry partnership, research and thought leadership. We work with the top credit unions across the U.S., powering more than 8 billion transactions annually.

Co-op Solutions. Make every experience matter.

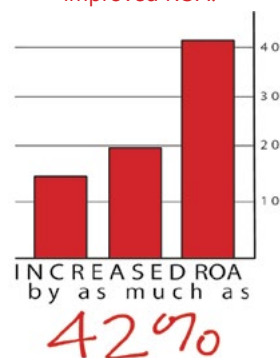
PROUD ASSOCIATE
BUSINESS MEMBER



Redmond provides a turn-key spectrum of services, including:

Prescriptive Consumer Analytics
Market Analysis
Trade Area Analysis
Branch Deployment Studies
Site Identification & Acquisition
Brand Integration
Architecture
Construction

Redmond clients that used our Prescriptive Consumer Data Analytics have **grown assets, loans and improved ROA!**



The Redmond Company consulting division uses advanced data analytics to provide actionable insight for our clients. We calculate your most profitable member profiles and use this information to select the **RIGHT** locations for branch deployment.



TheRedmondCo.com

Provider Directory



Corporate Central Credit Union and Our Family of CUSOs (Think|Stack, InterLutions, QuantyPhi)

6262 South Lowell Place
Muskego, WI 53150

Chris Felton
800-242-4747

chris.felton@corpcu.com
www.corpcu.com

Corporate Central and our family of CUSOs offer innovative solutions to help credit unions succeed. Our employee benefits CUSO, InterLutions, delivers top-quality and low-cost healthcare coverage to over 10,000 credit union associates. QuantyPhi, our balance sheet optimization CUSO, provides a full array of investment, liquidity, and ALM consulting solutions. Our technology solutions CUSO, Think|Stack, offers managed security, cloud migration, remote monitoring, and more. Together, we are a strong, progressive, and growing team helping credit unions to be wildly successful.

PROUD ASSOCIATE
BUSINESS MEMBER



ConServe

200 CrossKeys Office Park
Fairport, NY 14450
Michelle Hartmann
866-761-0700
salesinfo@conserve-arm.com
www.conserve-arm.com

For over 37 years, ConServe's innovative collection approach has helped our Clients maximize recoveries and reduce charge-off accounts. Our unique synergy of analytics-driven technologies and skilled collection experts optimizes collection results, increasing your return on investment. We adhere to the highest measures of quality, consistency, and performance standards. Our team is dedicated to Fostering Financial Freedom® by helping your members meet their financial obligations in a way that empowers them with a sense of control and self-esteem.



Corelation

2305 Historic Decatur Road
#300
San Diego, CA 92106
Rob Landis
619-876-5074
rlandis@corelationinc.com
www.corelationinc.com

Corelation's KeyStone core processing solution provides a truly open, person-centric system that is efficient, intuitive, and backed by unparalleled client service. KeyStone's philosophy is to deliver standard 'More in the Core' features, while also offering true integration to provide you the freedom to choose the vendors you want to work with. KeyStone empowers credit unions to offer the best products and services for member attraction and retention. KeyStone's intricate solution is elegant, yet powerful, as Corelation's developers have a proven track record of creating successful core technology solely for credit unions. Discover the Corelation difference!



Coviance

3001 Westown Parkway Suite 200
West Des Moines, IA 50266
Jill Skinner
855-525-6730
jkskinner@lenderclose.com
www.coviance.com

Founded in 2015, Coviance (formerly LenderClose) is a fintech company on a mission to perfect the lending experience through automation and intelligence. Our cloud-based platform, Home Equity Express™ (HEX), automates the home equity loan process by using data-driven intelligence and configurable workflows to deliver a superior experience, efficiently scale home equity volume, and a clear to close in hours. This out-of-the-box solution is easy to implement and frictionless, so credit unions can focus on what matters most--the member's experience. Coviance was selected as the National Association of Credit Union Service Organizations' 2022 CUSO of the Year.

PROUD ASSOCIATE
BUSINESS MEMBER



Provider Directory



Credit Union National Association

4703 Madison Yards Way, Suite 300
Madison, WI 53705
Greg Michlig
800-356-9655
hello@cuna.coop
www.cuna.org

Credit Union National Association is the most credible trade association and the only national association that advocates on behalf of all of America's credit unions. We work tirelessly to protect your best interests in Washington and all 50 states. We fuel your professional growth at every level and champion the credit union story at every turn.



Cubus Solutions, Inc.

3049 Independence Drive, Suite A
Livermore, CA 94551
Mary Ann Herne
925-344-8626
maryann.herne@cubussolutions.com
www.cubussolutions.com

Cubus Solutions helps credit unions that want to stay competitive with banks by providing them with innovative technology solutions that help make banking easy and members happy. Our feature-rich omni-channel digital banking platform is easy to use, increases peace of mind, lowers costs, and is future-ready. Other solutions include: Statements and Letters; Alerts; Online Loan Payments; Loan Skips; Checking Rewards and Card Cash Back. Cubus Solutions is a trusted solution provider for over a hundred customers, with over 15 years of delivering superlative value for our customers. We don't just build software, we solve problems. For more information, visit www.cubussolutions.com.



CU-Interface

4125 Highlander Parkway
Richfield, OH 44286
Christian Dabney
330-741-9495
cdabney@cuiinterface.com
www.cuiinterface.com

CU-Interface and our newly formed CUSO, Cooperative Technology Solutions is proud to offer mpowered, a leading Core Data Processing platform that drives accelerated business performance for Credit Unions. A boutique size company and experience, CU-Interface focuses on maintaining high-quality, in-house support and technology while providing the services your current and future members expect. Let us show you how our transparent pricing model and partnership can help you achieve your goals.



CUNA Councils

4703 Madison Yards Way, Suite 300
Madison, WI 53705
David Rohn
800-356-9655
drohn@cuna.coop
www.cunacouncils.org

CUNA Councils are national professional societies run for and by credit union executives. With 8,000+ members across eight distinct areas of expertise, you'll connect with peers focused on similar aspects of credit union management. Join CUNA Councils for discipline-specific professional development. From our annual conferences and expert virtual roundtables to detailed white papers and networking opportunities, CUNA Councils members get access to unrivaled industry resources. Learn from peers nationwide, online and in person, and gain new insights that benefit you, your credit union and your members.

**Others Talk.
We Deliver!**



vCISO / CYBER PROGRAM

CONTINUITY & RESILIENCE / BCM

PORTFOLIO & PROJECT MGMT

STRATEGIC DECISIONING

RISK PROGRAM

vCIO



www.UpStreme.com

Provider Directory



CUNA Strategic Services

4703 Madison Yards Way, Suite 300
Madison, WI 53705
Barb Lowman
800-356-9655
blowman@cuna.coop
www.cunastrategicservices.com

From the newest products to tried-and-true solutions, CUNA Strategic Services connects credit unions and leagues to the industry's top solution providers. Our alliances drive membership, grow revenue, promote operational excellence and foster collaboration.



DataTrac

6666 Odana Road
Suite 246
Madison, WI 53719
Ken Wanek
414-223-2320
ken.wanek@datatrac.net
www.datatrac.net/memberbenefits

Differentiate yourself! Generate new members, grow deposits and drive in more loans with DataTrac's Member Benefit Marketing Toolkit. Our marketing tools and research show your members how much you save them in interest and fees over the competition.

DataTrac Great Rate Awards certify that deposit and loan rates outperform the market average for comparable products.
www.datatrac.net/memberbenefits
Toolkits include:

- » **Competitive** comparison widgets for your website
- » **Member** Benefits Landing Pages for your website
- » **Animated** graphics for branch lobby digital displays
- » **Facebook** App
- » **Customized** competitive comparisons
- » **Proof** points to use in your marketing collateral
- » **Lead** generation



DefenseStorm

1720 Windward Concourse
Suite 275
Alpharetta, GA 30005
Mia Callicutt
470-519-0020
mia.callicutt@defensestorm.com
www.defensestorm.com

DefenseStorm ensures cyber risk readiness with a comprehensive system, including cyber security, compliance, and fraud. The only system specifically built for banking, it accounts for all the daunting challenges, regulations, and technology requirements you face as a financial institution. Our intelligent data engine, GRID, delivers real-time access, analysis, and action on all your critical threat data. Our Threat Ready Active Compliance (TRAC) team enables co-managed support 24x7x365, providing the support and expertise you need. Together, we will help you get ahead of the storm of threats.



Eltropy

1525 McCarthy Blvd.
Milpitas, CA 95035
Anne Casanova
650-580-5535
anne@eltropy.com
www.eltropy.com

Eltropy is the leading digital communications platform for community financial institutions (CFIs). Its AI-driven communications tools empower CFIs to communicate, automate, improve operations and engagement, and increase productivity across the institution – all while maintaining the highest standards of security and compliance. Using Eltropy's platform, CFIs can connect with their consumers anytime, anywhere via Text, Video, Secure Chat, co-browsing, screen sharing, and chatbot technology – all integrated into a single platform. For more information, please visit www.eltropy.com



Provider Directory



Enhanced Software Products, Inc.

1811 N Hutchinson Rd
Spokane Valley, WA 99212
Casey Boyer
800-456-5750
cboyer@espsolution.net
www.espsolution.net

For over 26 years ESP, Inc. has been instrumental in providing credit unions with solid, advanced core processing software (FORZA). All while providing solutions that complement the core and a limitless menu of integrations built on behalf of our clients. If you are looking for the best Support, a solid Core platform, and an opportunity to create partnerships, ESP should be on your list of Core Processors to look at.

PROUD ASSOCIATE
BUSINESS MEMBER



Envisant

Achieve your **vision.**

Envisant

1807 W. Diehl Road
Naperville, IL 60563
Jamie Conrad
800-942-7124
Sales@envisant.com
www.envisant.com/

Envisant helps credit unions achieve their vision. We bring experience and expertise to all areas of credit union service. Our forward-thinking product strategy features credit and debit programs, CUMONEY® Prepaid Visa® reloadable and gift card programs, portfolio development consulting, agent credit card programs, ATM services, and debt collection. We partner with more than 2,300 credit unions in 50 states.

PROUD ASSOCIATE
BUSINESS MEMBER



Envisant

Achieve your **vision.**

Envisant

1807 W. Diehl Road
Naperville, IL 60563
Jamie Conrad
800-942-7124
Sales@envisant.com
www.envisant.com/

ENVISANT, a comprehensive payments provider since 1969, offers prepaid cards as a turn-key solution for members: minimal or no upfront investment, convenient online ordering and mobile loading, a low per-card cost, and free marketing tools. The CUMONEY® Visa® Prepaid Debit suite features Gift Cards (virtual and plastic) along with tokenized reloadable cards including Everyday Spend® for daily money management and Travel Money® with added travel benefits. ENVISANT, a subsidiary of the Illinois Credit Union System, is a CUNA Strategic Services provider for their CUMONEY card program.



PROUD ASSOCIATE
BUSINESS MEMBER



Provider Directory



Ever Green 3C

3777 West Road
East Lansing, MI 48823
Eric Loehr
810-772-9863
info@evergreen3c.com
www.evergreen3c.com/

Ever Green 3C helps credit unions establish better engagement, loyalty and lifelong relationships with its members and communities through financial education solutions. Ever Green 3C is powered by Reseda Group, a wholly-owned CUSO of Michigan State University Federal Credit Union.



FICS

14285 Midway Road, Suite 200
Addison, TX 75001
Dyan Dalton
972-458-8583
marketing@fics.com
www.FICS.com

FICS® provides leading-edge residential loan origination and mortgage servicing software, and commercial loan servicing software. FICS® has delivered exceptional automation, performance, system support, and value for more than four decades. Mortgage Servicer® automates investor reporting, making it easy to sell loans to the secondary market and retain servicing. FICS' customers can choose an in-house or cloud-hosting solution. FICS® also provides innovative document management, API and web-based capabilities in its full suite of products and value for almost four decades.



FIS

323 Riverside Avenue
Jacksonville, FL 32202
Keith Nolan
727-227-5783
keith.nolan@fisglobal.com
www.fisglobal.com

Your members expect a seamless banking and payments experience, no matter how they interact with your credit union. But they value the highly personalized experience that made them choose you in the first place, too. FIS has been serving credit unions for more than 40 years, and nearly 70% of credit unions trust us to support their financial technology needs. Whether your goals are to enable capabilities like digital payments, mobile wallets, P2P payments, or you want tools that power exceptional experiences in the areas of credit, debit, fraud, loyalty, small business and money movement, we've got you covered through a direct, trusted partnership that delivers shared success. Let's advance your member experience together.

PROUD ASSOCIATE
BUSINESS MEMBER



Fiserv

255 Fiserv Drive
Brookfield, WI 53045
Amy Drake
812-204-2693
amy.drake@fiserv.com
www.fiserv.com

Fiserv, Inc. (NASDAQ: FISV) aspires to move money and information in a way that moves the world. As a global leader in payments and financial technology, the company helps clients achieve best-in-class results through a commitment to innovation and excellence in areas including account processing and digital banking solutions; card issuer processing and network services; payments; e-commerce; merchant acquiring and processing; and the Clover® cloud-based point-of-sale and business management platform.

Fiserv is a member of the S&P 500® Index, the FORTUNE® 500, and has been recognized as one of FORTUNE World's Most Admired Companies® for 11 of the past 14 years and named among the World's Most Innovative Companies by Fast Company for two consecutive years. Visit fiserv.com and follow on social media for more information and the latest company news.

PROUD ASSOCIATE
BUSINESS MEMBER



Provider Directory



FlowTracker Analytics, Inc

77 Finch Avenue East, Suite 1007
Toronto, Ontario M2N 6H8
Boris Masip
917-580-3123

boris.masip@flowtrackeranalytics.com
www.flowtrackeranalytics.com/

FlowTracker Analytics delivers Active Deposit Management Solution for Credit Unions. Foster profitable growth by engaging in Active Deposit Management (ADM) to secure stable consumer deposits. ADM is all about actionable insights bankers can use. Reflect and make your conclusions:

» **How** effectively can you track the dynamics of your portfolio?

» **How** much New Money is coming in, out, or moving inside your portfolio?

» **Who** is bringing/losing the New Money? When? How?

» **Can** you proactively identify and react to demand signals evidenced by changes in member behavior?

» **Are** you optimizing your pricing strategy to minimize cannibalization costs?

» **Are** you actively managing a renewal strategy to focus on core member growth?

Active Deposit Management Solution from FlowTracker (The Deposit Guys). To you, the solution means to control, simplicity, accuracy, and reliability for deposit and relationship management decisions. It combines Intelligent Deposit Analysis with Member Relationship Strategy, delivering up to 15bps margin improvements and more stable consumer deposits.

» **Actively** build loyal member relationships by detecting and reacting to demand signals.

» **Optimize** and validate key pricing and promotion decisions

» **Control** cannibalization costs

» **Improve** pricing discipline

» **Optimize** relationships

The Deposit Guys' ADM Solution enables you to do what you want to do, but easier, faster, and more effective. Get proven loyalty, profitability, stability, and growth results with rapid zero-fuss implementation. Earn the right to become your members' preferred provider of financial services. Reach out to The Deposit Guys to learn more.



Foresight Group

2822 North Martin Luther King Jr. Blvd.
Lansing, MI 48906
Stacey Trzeciak
517-485-5700

staceyt@foresightgroup.net
www.foresightgroup.net

Foresight Group is one of Michigan's largest printers and producers of display graphics, signs and promotional products. They provide a complete range of robust, full-service, technology-driven printing solutions for credit unions and financial industry partners. Foresight Group is powered by Reseda Group, a wholly-owned CUSO of Michigan State University Federal Credit Union.



Glia

30 West 21st Street
4th Floor
New York, NY 10010

Candice Wright
Candice.Wright@glia.com
www.glia.com

Glia is reinventing how businesses support their customers in a digital world. Glia's Digital Customer Service (DCS) solution enriches web and mobile experiences with digital communication choices, on-screen collaboration, and AI-enabled assistance. Glia has partnered with over 400 credit unions, banks, insurance companies and other financial institutions worldwide to improve the customer experience and drive business results. Named a Deloitte Technology Fast 500™ company for the third year in a row and a Great Place to Work (with a 97% employee satisfaction rating), Glia continues to achieve broad industry recognition and customer service thought leadership, including publishing the definitive book on DCS with Wiley. The company has raised over \$150 million in funding from top investors. To learn more, visit glia.com.

Provider Directory



Human Emergence Group

445 East Ohio Street, Suite 300
Chicago, IL 60611
Michael Zwell
312-919-9494
mike@humanemergence.com
www.humanemergence.com

Are your employees ready to step up and lead when your executives retire? The Human Emergence Group helps credit unions prepare for the inevitable transition of leadership. We work with you to:

- » **Create** and execute succession plans that effectively develop your next generation of leaders.
- » **Craft** custom leadership competencies that meet your credit unions present and future needs.
- » **Assess** your current bench strength to formulate individual development plans and provide executive coaching.

The Human Emergence Group are proven experts in designing executive and management development programs that ensure leaders – at all levels – can perform to their highest potential.



Intranet
Connections

Intranet Connections

145 Chadwick Court
Suite 360
North Vancouver, British Columbia
V7M 3K1
844-924-9770
clientservices@intranetconnections.com
www.intranetconnections.com

Intranet Connections is on mission to help credit unions seize every moment and truly connect with their members. For over two decades, our intranet platform has been helping to modernize the employee experience by bringing presence, community, and purpose back into the workplace. We've helped hundreds of credit unions reduce siloed communications among branches, simplify business workflows, and give more time back to staff. Our out-of-the-box solution is designed to be user-friendly, enabling any employee to easily develop and maintain their own document libraries, eliminating misinformation through a single source of truth.



Jack Henry™

663 W. Hwy 60
P.O. Box 807
Monett, MO 65708-8215
Tracy Almquist
619-542-6951
talmquist@jackhenry.com
www.jackhenry.com

At Jack Henry™, we believe the world is a better place with community and regional financial institutions. And we intend to keep it that way. For more than 45 years, we've put financial institutions at the center of our modernization. We're here to help you innovate faster, differentiate strategically, and compete successfully – all with one goal in mind: to improve the financial health of the members you serve. Visit jackhenry.com to learn more.

PROUD ASSOCIATE
BUSINESS MEMBER



Credit Union
National
Association

Provider Directory



KingsBridgeBCP

34 Blair Park Road, Suite 104
Williston, VT 05495
Skip Williams
888-246-6642
skipw@kingsbridgebcp.com
www.kingsbridgebcp.com

For more than 35 years, KingsBridgeBCP has been providing Business Continuity Plans (BCPs) for Credit Unions who are focused on supporting members, no matter what chaos is impacting them. Looking to build a BCP "on your own" or needing a "Turn Key" solution, KingsBridgeBCP has a responsibly priced straightforward solution for you. The NCUA has called our plans "the best BCP I've ever seen". Use what your members will appreciate, a price conscious solution that works.



Member Access Processing

450 Alaskan Way South
Suite 246
Seattle, WA 98104
Krisanne Anderson
206-681-5675
krisanne.anderson@map.llc
www.mapprocessing.com

MAP card and payment services offers industry-leading, full-service Debit, Credit, Prepaid and ATM solutions. As the nation's only aggregator of the Visa Debit Processing Service platform for credit unions, MAP has realized a special role in the marketplace. We leverage our one-of-a-kind partnership with Visa to provide our clients the Reliability, Security, and Service that no other provider can offer. With our customizable, single-point technology systems, credit unions can achieve cardholder usage, loyalty and program efficiency to attain the most value from their payment products and services.



MeridianLink

3560 Hyland Avenue, #200
Costa Mesa, CA 92626
Anthony Fire
714-415-4375
salesupport@meridianlink.com
www.meridianlink.com

About MeridianLink MeridianLink® (NYSE: MLNK) powers digital lending and account opening for financial institutions and provides data verification solutions for consumer reporting agencies. MeridianLink's scalable, cloud-based platforms help customers build deeper relationships with consumers through data-driven, personalized experiences across the entire lending life cycle. MeridianLink enables customers to accelerate revenue growth, reduce risk, and exceed consumer expectations through seamless digital experiences. Its partner marketplace supports hundreds of integrations for tailored innovation. For more than 20 years, MeridianLink has prioritized the democratization of lending for consumers, businesses, and communities. Learn more at www.meridianlink.com.



Midwest Loan Services

400 Quincy Street, Floor 6
Hancock, MI 49930
Rachelle Berger
800-229-5417
sales@midwestloanservices.com
www.midwestloanservices.com/

Midwest Loan Services provides private-label mortgage subservicing to credit unions and CUSOs nationwide. At Midwest, we understand the exceptional level of service that you provide your members, and we will treat them just as you would. Our friendly, responsive service and industry-leading technologies help you retain members, reduce costs, and ensure regulatory and operational compliance. No matter what your mortgage volume, we will make sure you and your members receive the quality service you deserve.

Provider Directory



Millennial Vision, Inc.

4578 Highland Drive, Suite A-150
Salt Lake City, UT 84117
Scott Cowan
888-684-6684
scottc@mviusa.com
www.mviusa.com

Millennial Vision Inc., (MVi) provides our customers with World Class Enterprise Content Management Solutions and Document Management Systems by Laserfiche to the Credit Union and Financial Industry. MVi develops integrations into Core Data Processing systems by leveraging our industry expertise and Laserfiche's experience providing cost effective solutions to customers throughout the world. MVi's integrations streamline operations and improve service via Workflows, Forms and Business Process Automation providing cost saving technologies enterprise wide. MVi's current integrations include: e-signatures, Pre-Scan Teller C21, C21 Branch and Member Deposit Capture, Mobile document access, COLD Reports, Document Tracking and Home Banking Access. MVi also specializes in Cloud, Virtual Machine and SAN environments.
www.mviusa.com, 888-684-6684,
info@mviusa.com



Nearman, Maynard, Vallez, CPAs, P.A.

10661 N. Kendall Drive, #201
Miami, FL 33176
Chris Vallez, CPA
305-598-1730
info@nearman.com
www.nearman.com

Established in 1979, Nearman, Maynard, Vallez, CPAs provides auditing and consulting services exclusively to credit unions throughout the United States. Our dedication to credit unions has given us the unique ability to provide exceptional service at a reasonable price. Our primary objective is to assist our clients in accomplishing their goal of being the best financial institution for their members. This objective is achieved through the quality of our audits, an excellent level of client service, and the overall value we provide. Our services include certified audits, Supervisory Committee Guide audits, pension audits, internal audit, compliance, and much more!



Oak Tree Business Systems, Inc.

42645 Moonridge Road
P.O. Box 6967
Big Bear Lake, CA 92315
Jeff Osburn
800-537-9598
Jeff@Oaktreebiz.com
www.oaktreebiz.com

For over 40 years, Oak Tree Business Systems has provided a high-quality forms solution to credit unions, nationwide. Our forms and disclosures adhere to your credit union's policies and procedures while remaining compliant with applicable state laws and federal regulations. Products and services to fit your needs:

- » **Membership**
- » **Consumer** lending
- » **Open-end** and closed-end home equity lending
- » **Business** membership
- » **Commercial** lending
- » **Data-linking** services
- » **Forms** training
- » **Compliance** support
- » **Spanish-translated** documents

Oak Tree can also help you stay on budget with stable yearly pricing. Our easy-to-use forms are designed to work with all data and loan processing systems, and our commitment to providing excellent customer service is unparalleled. Contact us today to learn more about how Oak Tree can help your credit union reach more members and achieve all your credit union's goals.

Provider Directory



OM Financial Group

OM Financial Group

101 Federal Street
Suite 800
Boston, MA 02110
Emily Barrows
617-526-8243
ebarrows@financialguide.com
www.om-financial.com

OM Financial Group is an executive benefit consulting firm that specializes in providing sound advice to credit unions and non-profit organizations about Supplemental Executive Retirement Plans (SERPs) for their key executives. OM pioneered Collateral Assignment Split Dollar (Split Dollar) programs for the credit union industry and continues to specialize in offering competitive and cost-effective employee benefit solutions. We believe that a relationship-driven approach with each of our clients ensures we fully understand their individual needs. Our goal is to educate executives and their boards, so they are able to make informed strategic decisions that are in the best interest of their organization for years to come.



Origence

18400 Von Karman Avenue
Suite 900
Irvine, CA 92612
Origence Information
877-744-2853
info@origence.com
www.origence.com

Origence delivers the ultimate origination experience. For 25 years, we have helped lenders increase loan volume, create efficiencies, and fuel growth through our automotive, lending, and strategic solutions. Today, our next generation technology solutions and services span across indirect lending, consumer loan and account origination, marketing automation, auto shopping, and lending operations. We help financial institutions optimize the customer experience, leveraging integrated solutions to bring efficiency, productivity, and profitability to lenders. Visit www.origence.com for more information.

PROUD ASSOCIATE
BUSINESS MEMBER



Credit Union
National
Association



Outsolve

3330 W. Esplanade Avenue
Suite 301
Metairie, LA 70002
David Isaula
504-962-7901
cisaula@outsolve.com
www.outsolve.com

OutSolve is a leading employment compliance consulting firm dedicated to helping companies comply with Office of Federal Contractor Compliance Programs' (OFCCP) regulatory requirements. The Company specializes in affirmative action plan preparation, OFCCP audit support, compensation analysis, state pay reporting, EEO-1/VETS reporting, training, diversity, equity, and inclusion (DEI), and ESG services.



Prisma CAMPAIGNS

Prisma Campaigns

66 W Flagler Street, 9th Floor
Miami, FL 33130
Camilo Alvarez
786-808-1828
sales@prismacampaigns.com
www.prismacampaigns.com

Prisma Campaigns offers an omnichannel marketing automation solution that helps credit unions use their data to deepen member relationships. More than 50 credit unions rely on Prisma to deliver personalized, automated and targeted onboarding and cross-selling campaigns. Prisma's platform reaches members across all channels, including email, text, web, online and mobile banking. Prisma became a CUNA Strategic Services preferred provider in 2021 and has received the endorsement of more than 22 credit union leagues as of mid-2022.



CUNA
Strategic Services

Provider Directory



Prodigy

420 E. South Temple
Suite 520
Salt Lake City, UT 84111
Jon McMullen
812-787-0254
jmcmullen@cuprodigy.com
www.cuprodigy.com

Prodigy is a proud Credit Union Service Organization offering core and cloud services to credit unions across the United States. Built and supported by our credit union partners, Prodigy has taken a Fintech model to create an open, modern, API focused core software platform. Our core is a native browser-based, cloud-centered, beautifully designed, user-friendly platform. In addition, Prodigy offers an open API to allow credit unions to work with whomever they want. Prodigy believes in creating a collaborative environment that gives credit unions a voice. So join our core revolution and take control of your credit union's technological destiny today.



PSCU

560 Carillon Parkway
St. Petersburg, FL 33716
Chris Gunnare
844-367-7728
moreinfo@pscu.com
www.pscu.com

PSCU, the nation's premier payments CUSO and an integrated financial technology solutions provider, supports the success of more than 2,400 financial institutions and processes nearly 7.7 billion transactions annually. Committed to service excellence and focused on continuous innovation, PSCU's payment processing, fraud and risk management, data and analytics, digital banking, strategic consulting and real-time payments platforms, along with 24/7/365 member support via its contact centers, help deliver personalized, connected experiences. The origin of PSCU's model is collaboration and scale, and the company has leveraged its influence on behalf of credit unions and their members for more than 45 years. Today, PSCU provides an end-to-end, competitive advantage that enables credit unions to securely grow and meet evolving consumer demands. For more information, visit pscu.com.

PROUD ASSOCIATE
BUSINESS MEMBER



QRL Financial Services

801 Deming Way
Madison, WI 53717
Tom Secor
888-766-4734
solutions@qrlfinancial.com
www.go.qrlfinancial.com

QRL Financial Services offers complete residential mortgage lending services to credit unions nationwide, providing solutions for secondary market and portfolio loan originations. QRL has a full suite of conventional and government loan products and retains servicing on loans protecting your members from cross-sales and other ancillary losses. Our "Mortgage Solutions" option provides scalability to your expense and staffing challenges. QRL can also perform a wide variety of mortgage fulfillment services for your portfolio loans. A dedicated team at QRL is assigned to work with your credit union ensuring a consistent and exceptional mortgage experience for you and your members!



QwickRate®

QwickRate

1350 Church Street Ext. NE,
Suite 200
Marietta, GA 30060
David Suri
800-285-8626
david.suri@qwickrate.com
www.qwickrate.com

QwickRate's value-added and affordable solutions for credit unions include: the premier CD Marketplace for institutional CD investing and funding with no transaction fees, unlimited support and automated accruals and reporting; CECLSolver™ for an easy to use and practical CECL compliance solution; IntelliCredit™ for game-changing loan review services plus loan review and portfolio analyzer solutions for internal teams; and QwickBonds for ease of access to fixed income investments. Contact info@qwickrate.com for more information.

Provider Directory



Real-time competitor insights

RateShop, LLC

1000 Brickell Avenue, Suite 715
PMB 408

Miami, FL 33131

Michelle Moreno

888-216-7601

michelle.moreno@rateshopreports.com

www.rateshopreports.com

BE THE SMARTEST COMPETITOR IN YOUR MARKET

Compare real-time competitor data for deposit and loan repricing with RateShop Reports. Deposit, consumer loan and mortgage rates are updated everyday on a daily or hourly basis. You wouldn't make decisions based upon outdated financial information, why use obsolete competitor data for your ALCO meetings and pricing decisions? Make more confident pricing decisions with real-time RateShop Reports. Select your own competitors:

» **75+** retail deposit and loan products

» **Rates** updated daily or hourly

» **Company-wide** access for your entire team 24/7/365

» **Customizable**, meeting ready reports in one click

Build your custom RateShop Report today!

www.rateshopreports.com



Realtime Electronic Payments

REPAY

3 West Paces Ferry Road
Suite 200

Atlanta, GA 30305

Heather Dietel

877-607-5468

info@repay.com

www.repay.com/credit-unions/

Simplify payment processing, streamline reconciliation, reduce servicing costs and deliver a convenient, self-serve experience for members through REPAY's (NASDAQ: RPAY) next-generation payment technology. Integrated with the leading core systems, REPAY enables credit unions to accept digital payments anytime, anywhere and instantly fund loans through realtime disbursements. Industry experts deliver the advanced payment solutions of today while anticipating and preparing for the needs of tomorrow. REPAY sets the industry standard for making members matter most.



RESEDA GROUP

Reseda Group

3777 West Road

East Lansing, MI 48823

Eric Loehr

810-772-9863

eric.loehr@resedagroup.com

www.resedagroup.com

Reseda Group helps credit unions thrive by delivering innovative products and solutions to their members and communities. Driven by a shared goal of building better – everything – for members, Reseda Group invests in strategic partners bringing new technologies, digital resources and industry solutions to market. Reseda Group is a wholly owned credit union service organization (CUSO) of Michigan State University Federal Credit Union. The credit union industry platforms and solutions our partners provide deliver better every day. Visit resedagroup.com for more information on our innovative partners and their solutions for credit unions.

PROUD ASSOCIATE
BUSINESS MEMBER



Credit Union
National
Association

Provider Directory



SkyStem LLC

1115 Broadway Floor 11th, #1120
New York, NY 10010-3450
Nancy Wu
646-833-3177
nwu@skystem.com
www.skystem.com

Headquartered in the heart of New York City, SkyStem delivers a powerful month-end close solution for organizations seeking to streamline their financial processes. The company's flagship solution, ART, is an enterprise technology that helps CFOs and Controllers shorten the month-end close and the time to issue financials by automating balance sheet reconciliations, managing month-end tasks, performing flux analysis and providing insightful reporting. The web-based solution streamlines and eliminates up to 90 percent of manual activities while strengthening internal controls and corporate governance.



Spave

3777 West Road
East Lansing, MI 48823
Eric Loehr
810-772-9863
partners@spave.io
www.spave.io

Spave's proprietary technology platform and process solve challenges by balancing spending, saving, and giving habits for consumers (particularly millennials) using cutting-edge mobile technology. It is designed to help financial institutions better engage with their constituents (members, contributors, and community). The mission of Spave is to make the world better — one community, one person, one transaction at a time — by transforming spending for good so that every dollar spent is an investment in an individual and a better world. With access to more than 1.5 million accredited nonprofits, the Spave® App—empowers people to use everyday spending to effortlessly save for themselves and give to causes they care about, without changing the way they live.



Synergent

2 Ledgeview Drive
Westbrook, ME 04092
Tim Brooks
800-341-0180
tbrooks@mainecul.org
www.synergentcorp.com

Credit unions partnering with Synergent gain a data-driven managed services provider that becomes a true extension of their team. We are a strategic host of Jack Henry™ Symitar® core processing, deliver integrated credit and debit card solutions, and provide customized marketing and communication services—all through a single source. Synergent treats every credit union as unique, customizing integrated solutions for each of its credit union partners. We strive to make credit unions stronger and more efficient, and our goal is to make sure they get the most out of their technology investments. Learn more about the Synergent Advantage at synergentcorp.com.

Provider Directory



The Beans

415 Mission Street FL 37
San Francisco, CA 94105
Melissa Pancoast
404-383-6524
hello@thebeans.io
www.thebeans.io

The Beans (www.thebeans.io) is simplifying the path to financial success by automating cash flow planning and support for your members. The Beans' financial wellness technology deepens member engagement and attracts new members in pursuit of better money + life balance. The Beans specializes in America's Caring Professionals, those working in careers of mission over money. Founded by a former math teacher turned University of Oxford researcher, The Beans offers an evidence-based alternative to traditional financial wellness.



The Redmond Company

W228 N745 Westmound Drive
Waukesha, WI 53186
Marty Steinert
262-549-9600
msteinert@theredmondco.com
www.TheRedmondCo.com

Redmond, your premier design/build partner, has completed 800+ financial institution projects. Experts in Prescriptive Consumer Analytics, Market Analysis, Trade Area Analysis, Branch Deployment Studies, Site Identification and Acquisition, Brand Integration, Architecture and Construction. Redmond uses advanced analytics to identify your optimal market, trade area, area of influence and site, using "The Science of Where" and Prescriptive Consumer Analytics. Ultimately, increasing the potential profitability and ROI of your facility by selecting the best and most profitable location. Let our award-winning team help you increase the potential profitability of your facilities, improve employee productivity and enhance member experiences.



Trellance

7650 W Courtney Campbell
Causeway, Suite 900
Tampa, FL 33607
Patrick McElhenie
888-930-2728
salestream@trellance.com
www.trellance.com

Trellance is a leading technology partner for credit unions, delivering innovative technology solutions to help credit unions achieve more. With a comprehensive suite of analytics, cloud and talent solutions, the Trellance team ensures credit unions increase efficiency, manage risk, and improve member experience. As a tech partner, Trellance ensures that credit unions have access to the latest generation of fintech solutions, filled with powerful tools such as artificial intelligence and machine learning. Learn more at Trellance.com.

PROUD ASSOCIATE
BUSINESS MEMBER



Provider Directory



TruStage

5910 Mineral Point Road
Madison, WI 53705
Contact your Account Executive
800-356-2644
www.trustage.com

TruStage is a financially strong insurance, investment and technology provider, built on the philosophy of people helping people. We believe a brighter financial future should be accessible to everyone, and our products and solutions help people confidently make financial decisions that work for them at every stage of life. With a culture rooted and focused on creating a more equitable society and financial system, we are deeply committed to giving back to our communities to improve the lives of those we serve. For more information, visit www.trustage.com.



Tyfone Dramatically Better Digital Banking®

5331 S Macadam Ave, #251
Portland, OR 97239
Josh DeTar
971-227-3705
josh.detar@tyfone.com
www.tyfone.com

At Tyfone, we understand that an elegant, engaging, intuitive user experience is the minimum requirement for any digital banking provider in today's market. What differentiates us is our unwavering commitment to exceptional collaboration and communication. We consider each customer a true partner and place the highest value on every relationship.



Others Talk. We Deliver!

UpStreme, Inc.

1055 Westlakes Blvd., Suite 300
Berwyn, PA 19312
484-323-6290
Thomas Costello
484-323-6290
tcostello@upstreme.com
www.UpStreme.com

UpStreme's services within the Credit Union sector focus on 6 major areas: Portfolio & Project Management optimization, vCISO for Cybersecurity, Business Continuity & Resilience program development, Risk, Strategic Development and Execution, and vCIO. Our Credit Union clients range from \$200M to \$10B+. We are keenly aware of Credit Union specific needs & challenges and are also able to leverage our learnings from other industries to best support the growth and improvement of our CU Customers.

Provider Directory



Venminder

400 Ring Road
Suite 131
Elizabethtown, KY 42701
Jim Ciortan
888-836-6463
sales@venminder.com
www.venminder.com

A CUNA Strategic Services Alliance Provider, Venminder is an innovative, customer-motivated company that is mission-driven to help solve the many challenges organizations face when managing risks from outsourcing to third parties.

Venminder provides a dedicated platform to empower credit unions in effective end-to-end lifecycle management and mitigation of third-party risks. Venminder creates long-term collaborative partnerships with their customers, providing implementation assistance, product and best practices training, ongoing support, access to expertise, and more.



Visa

One Market Plaza, Suite 600
San Francisco, CA 94105
Kristin Ryan
571-439-8824
visacommunitypartners@visa.com
www.visa.com/communityissuers

Visa is a trusted network and world leader in digital payments, working to remove barriers and connect more people to the global economy. No matter the size of your business, Visa wants to work with you and help you grow. Visa has VPs in eight regions across the country to help support credit unions like yours. We're here to help you stay competitive while also engaging in activities relevant to the needs of your local communities. Work with Visa to get the tools, resources, and support you need to thrive.

PROUD ASSOCIATE
BUSINESS MEMBER



VolCorp

2460 Atrium Way
Nashville, TN 37214
Wade Stapleton
615-232-7984
wstapleton@volcorp.org
www.volcorp.org

VolCorp's mission is to inspire credit unions to reach new heights by providing dynamic payment solutions, custom investment services, and unparalleled member service. Headquartered in Nashville, Tennessee, VolCorp has been serving the credit union movement since 1981.

VolCorp equips credit unions with the products and services to help them prosper. Our CUSO, Symphony, offers guidance to credit unions in critical areas such as Business Continuity Management, Enterprise Risk Management, Information Security, and Supervisory Committee Audits. To learn more about VolCorp, please visit volcorp.org.

PROUD ASSOCIATE
BUSINESS MEMBER



Managed Cybersecurity

IT Management

A Technology Company

Fraud/AML

Sanctions Screening

Document Delivery

Advisory Services



csiweb.com

Fintexperts™ By Your Side

Your Fintech, Regtech and Cybersecurity Partner

OFCCP Compliance Services for Credit Unions

50 or more employees?

We can prepare all required OFCCP plans and reports on your behalf.

**OFCCP
portal
registration**

**pay
equity
reporting**



**affirmative
action plan
development**

**diversity,
equity, &
inclusion**

**EEO/VETS
reporting**

Learn more at outsolve.com/cu

outsolve
BEYOND COMPLIANCE

CUNA Associate Business Membership

Elite Member



Premier Members



Choice Members



Associate Members

Aux	CURevl	Nectar
Caribou	CU Servnet	NLCUP
CastleGarde	Enhanced Software Products (ESP)	Nymbus CUSO
Catalyst Corporate FCU	Envisant	Pactola
CliftonLarsonAllen (CLA)	Extensia Financial	Premier Consumer Capital
COLAB	FIS	Reseda Group
Commercial Alliance	Fiserv	Samaha & Associates
Comply-YES!	Jack Henry	Splash Financial
Constant	Louisiana Corporate Credit Union	Strum
Cooperative Business Services	Mbanq CUSO	Tricorp FCU
Corporate America Credit Union	Members Trust Company	Vanco Payments LLC
Corporate One FCU	Millennium Corporate CU	VisiFI
CU ATM Services LLC	Mitel	Vizo Financial FCU
CU Business Group	NACUSO	Volunteer Corporate CU
CU Healthcare PayCard	NASCUS	